

THE BUILDINGS OF MOREFA BORTH

- the Marsh Harbour

Ceredigion



That part of Borth Village on a pebble bank with the sea on one side and the Cors Fochno marsh some reclaimed and the railway on the other. In the distance is the River Dyfi. Photograph Michael Lewis

Photographs and History by BERYL LEWIS

This work is for research and educational purposes only.

COMPTON HOUSE Morfa Borth

At the beach side in the middle of Borth High Street. A house and former gift shop built after 1904 on land between Sydney and Cleveland. In business by 1925.

Compton House in 2016. The house is behind the shop.



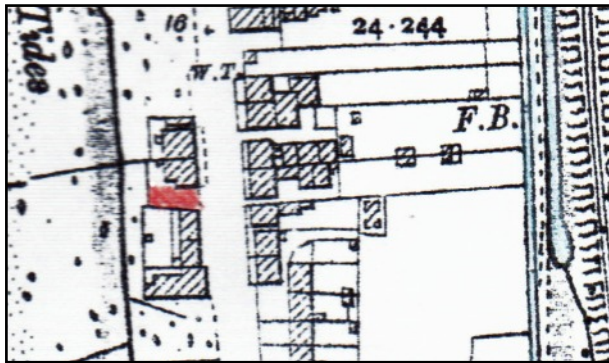
The shop is single storey under a gable roof parallel to the street. Described as a 'wooden shop' in 1925 not all is wooden today. There is a panel of brick wall on the north side of the shop, and beneath the shop windows are glazed tiles. The north gable end is wooden, and has what looks like a blocked window. Above the shop windows is an angled sign board, supported by a carved bracket on the south end. 'Gift Shop and Fishing Tackle' has been painted over, leaving COMPTON. Today in 2016 this shop is not in use.

Behind the shop is a two storey house, necessarily not very wide as it has a narrow site but long. It ends where the yards of adjoining houses end and so has a yard extending out into the beach. Its roof is hipped but not symmetrical and there is a single storey connecting section with the shop. The hipped roof only covers the front section of the house. Another two storey section joins it at right angles which stretches back towards the beach, its roof at right angles to the main roof, and is less sloping. Access to an extension with a back door to the yard is by a gated passage on the north side of the building.



Compton House from the beach in 2015. The south side which adjoins the yard of Sydney House has no windows to overlook its neighbour. Its upper window has fine views out to sea. The lower window is protected from bad storms, The yard ends with a brick wall with an opening with steps down to the beach and it continues behind Cleveland.

The shop and house are built on ground enclosed in 1825 by John Morgan on the stone embankment thrown up by the sea and called 'waste' by the Crown Manor who owned it because it was no good for farming. The road is ancient, having been used in the eleventh century and became a turnpike road in the 1770s. John Morgan built a cottage on his encroachment, but the shop and house stand on the south part of his land, his cottage was further north. For many years no-one built on this land. There was still no building there in 1904.



LEFT In 1904 the site of the house and shop is marked in red. (Ordnance Survey 25 inch map revised in 1904, published in 1905, Cardiganshire III.10)



This is from a 'Borth Official Guide' dated 1933 (Ceredigion Archives)

The house and shop were there by 1925 when Hugh Jones paid the rates for a 'Wooden Shop' called Compton House. He paid £1.15s, £2 gross. This was the valuation of other 'wooden shops'. There was no mention of a house. In 1934 Mrs Jones had been paying the rates. The description was then Compton House and Shop and the rate paid had increased to include a house and was £7, £11 gross for the half year. Mary E. Griffiths then paid the rates, and also in 1938. With votes for Compton House in the General Election of 1945 were Ebenezer H. Griffiths and Eleanor Griffiths and also Leslie and Helena Beatrice Wells. Mr Wells paid the rates

in 1949. . In a Borth Guide Book dated 1968 Compton House was a Gift Shop that sold novelties, beach toys and fishing tackle (Ceredigion Archives, also Electoral Registers and Rates)

Archifdy Ceredigion Archives
yn cyflwyno / presents
Tai'r Borth / Houses of Borth
gan/by Beryl Lewis
[cyf/ref ADX/1629]

Mae **Tai'r Borth** yn cynnwys dros 350 hanes sy'n ymwneud ag adeiladau unigol ac mae'r hanesion wedi'u darlunio â chyfoeth o ffotograffau, mapiau a dogfennau. Mae'r ffeiliau ar gael ar ein gwefan: <https://www.archifdy-ceredigion.org.uk/tairborth.php?lang=cy>

Hoffem ddiolch i Beryl am fod mor garedig â chaniatáu i ni rannu ei gwaith â'r gynulleidfa ehangaf bosibl.

Ceidw Beryl Lewis yr hawlfraint yn ei gwaith ac mae'r hanesion yn cael eu rhannu at ddibenion preifat ac ymchwil yn unig.

Houses of Borth consists of over 350 histories of individual buildings, lavishly illustrated with photographs, maps and documents. All the files are available from our website: <https://www.archifdy-ceredigion.org.uk/tairborth.php>

We would like to thank Beryl for her kindness in letting us share her work with the widest possible audience.

Beryl Lewis retains the copyright in her work and the histories are made available for private use and research only.



Cyngor Sir
CEREDIGION
County Council



Archifdy
Ceredigion
Archives