

THE BUILDINGS OF MOREFA BORTH

- the Marsh Harbour

Ceredigion



That part of Borth Village on a pebble bank with the sea on one side and the Cors Fochno marsh some reclaimed and the railway on the other. In the distance is the River Dyfi. Photograph Michael Lewis

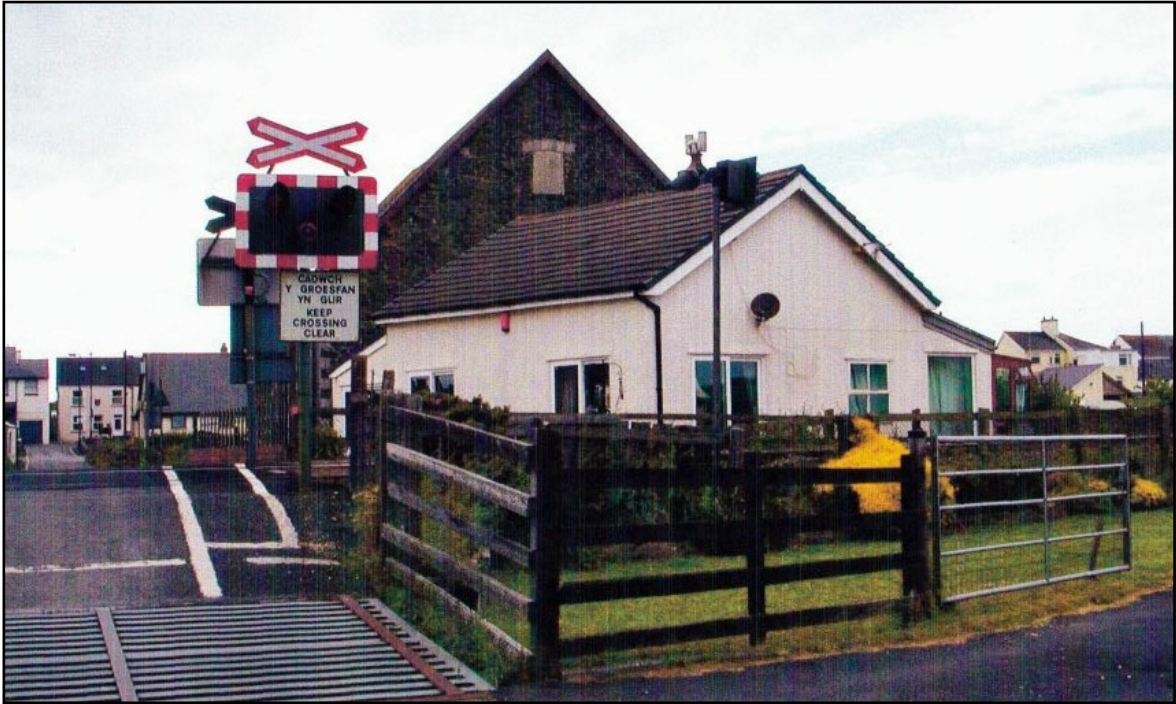
Photographs and History by BERYL LEWIS

This work is for research and educational purposes only.

CROSSING COTTAGE

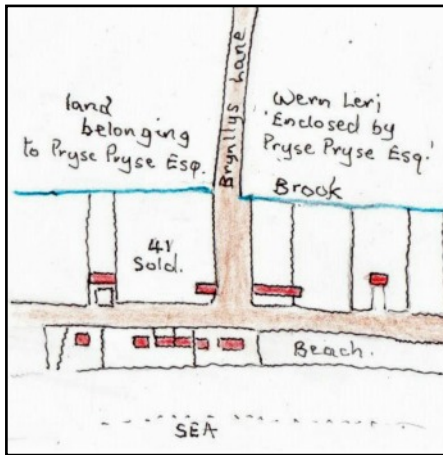
On the lane to Ynys Fergi and the Animalarium

Built when the railway came to Borth, open to passengers in 1863, and is very close to railway crossing. The Chapel was built afterwards, in 1876 – but gave its name to the crossing.

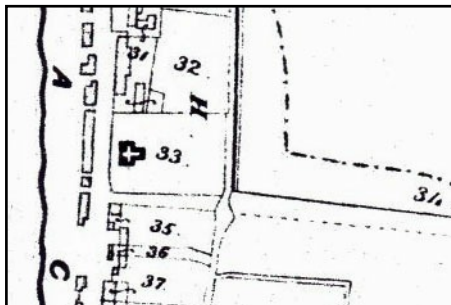


ABOVE The Cottage in 2018. It has a small garden in front, but has more garden in between the cottage and the railway line.

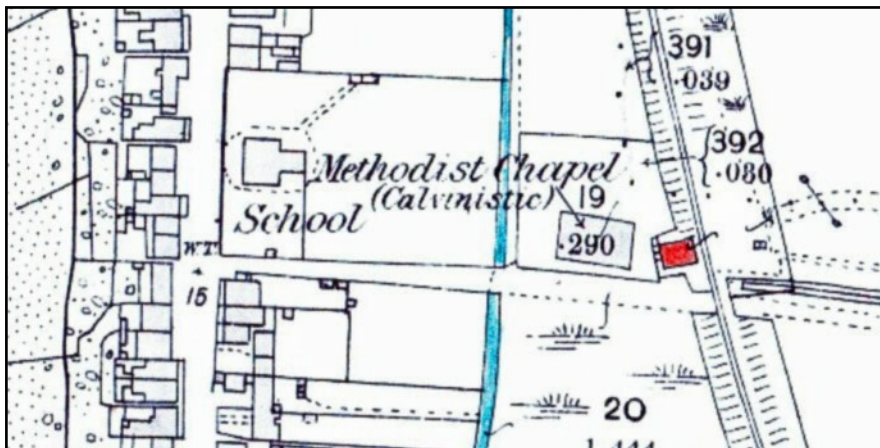
Crossing Cottage Page 2



LEFT The ground in 1829 on which the cottage was built belonged to Pryse Pryse of Gogerddan. The lane was already there, called the lane to Brynlllys Farm. A brook ran behind the Morfa Borth village - water had been diverted from the tail race of the Glanlerry Mill plus some small streams. The land across the brook, Number 41 with a small cottage belonged to the Vicar. The lane crossed the brook with a ford.



LEFT In 1848 the ground was part of a large meadow, Number 34 and farming it was Richard James of Brynlllys. A National School had been built on the Vicar's land, and the Soar Chapel was not yet built (Detail from the Tithe Apportionments Map for Llanfihangel Genau'r Glyn, Cyfoeth township, online at CYNEFIN)



LEFT When the railway was built from Borth to Aberystwyth 1863 - 1864 a level crossing was needed for the lane, and the cottage was built for the keeper of the crossing, it is marked in red. This map was surveyed in

1886. The Chapel had been built and the cottage was close to it, having a very small garden leading down to the gate. The cottage was a simple rectangular shape. (Detail from the 25 inch Ordnance Survey Map published in 1888, Cardiganshire NW)

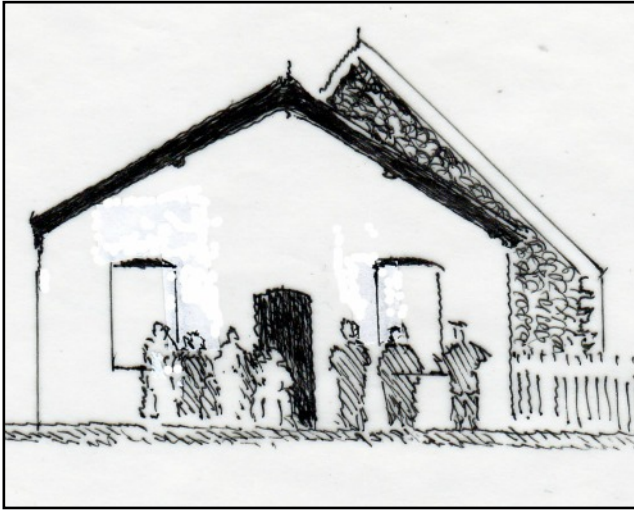
In 1867 a gatekeeper was employed at the crossing one of four men employed at the station (Coastlines of the Cambrian Railways, Vol. 1, C. C. Green)

At the 1871 Census in the cottage was Mary Williams, a widow aged 47, born in Solva Pembrokeshire. With her was her eight year old daughter Eliza Jane Williams.

At the 1881 Census in the cottage Eliza Jane Williams then aged 18, was a laundress.

Mrs Mary Williams was the gatekeeper in August 1889. She was severely injured when shutting a gate blown open by the wind and was hit by an engine. She slowly recovered. (see Coastlines)

At the 1891 Census still in the cottage was Mary Williams she spoke both Welsh and English. She had a 15 year old girl visitor. In 1894 Mary Williams of the cottage laid out the murdered body of Mary Davies (Ceredigion, 2010).



LEFT A sketch from a photograph of the cottage taken about 1895 - the Soar Chapel is behind it. The cottage had a central doorway, and sash windows with small panes. The original can be seen in C.C. Green's book, 'The Coastlines of the Cambrian Railways' Volume 1 page 140. The people look as though they were wearing their best clothes and the Station Master was on the right, possibly Mary Williams and some of her family on the left, and some railway employees too.

On the 25 inch Ordnance Survey Map of 1905 nothing had changed.

In 1910 the Cottage was still owned by the Cambrian Railways and called 'Borth Level Crossing'. The tenant was Rowland Edwards. For a tax planned but not levied, he would have paid £2,16s, £3.30 gross. In 1911 in the cottage were Rowland who was a platelayer aged 57 born in Aberhosan and his wife Elizabeth also 57 - she was local, born in Borth, . They had had ten children, but the only child in the cottage in 1911 was their grand-daughter Maud Beecham aged 9 and born in London (Census).

In 1921 there was some bother because the turnstile did not lock when the gates were shut. (see Coastlines etc.)

Paying the rates in 1925 for the 'house at the level crossing' was Griffith E. Jones. He paid £2.

In 1934 rates were paid for a garage there by Richard Jones. The GWR then ran the railway and owned the place.

In 1949 Griffith Evans was living in the cottage and the rates were the same.

With a votes for the cottage in 1963 were Mervyn Pryse Phillips and Jane Eunice Phillips. (Electoral Registers and Rates, Ceredigion Archives)

Today the cottage has lean-to extensions on the west and north sides.

Archifdy Ceredigion Archives
yn cyflwyno / presents
Tai'r Borth / Houses of Borth
gan/by Beryl Lewis
[cyf/ref ADX/1629]

Mae **Tai'r Borth** yn cynnwys dros 350 hanes sy'n ymwneud ag adeiladau unigol ac mae'r hanesion wedi'u darlunio â chyfoeth o ffotograffau, mapiau a dogfennau. Mae'r ffeiliau ar gael ar ein gwefan: <https://www.archifdy-eredigion.org.uk/tairborth.php?lang=cy>

Hoffem ddiolch i Beryl am fod mor garedig â chaniatáu i ni rannu ei gwaith â'r gynulleidfa ehangaf bosibl.

Ceidw Beryl Lewis yr hawlfraint yn ei gwaith ac mae'r hanesion yn cael eu rhannu at ddibenion preifat ac ymchwil yn unig.

Houses of Borth consists of over 350 histories of individual buildings, lavishly illustrated with photographs, maps and documents. All the files are available from our website: <https://www.archifdy-eredigion.org.uk/tairborth.php>

We would like to thank Beryl for her kindness in letting us share her work with the widest possible audience.

Beryl Lewis retains the copyright in her work and the histories are made available for private use and research only.



Cyngor Sir
CEREDIGION
County Council



Archifdy
Ceredigion
Archives