

THE BUILDINGS OF MOREFA BORTH

- the Marsh Harbour

Ceredigion



That part of Borth Village on a pebble bank with the sea on one side and the Cors Fochno marsh some reclaimed and the railway on the other. In the distance is the River Dyfi. Photograph Michael Lewis

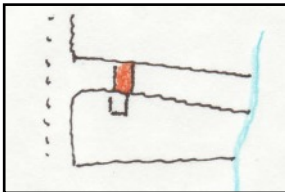
Photographs and History by BERYL LEWIS

This work is for research and educational purposes only.

ELTHAM'S GARDEN and its old Cottage (gone).

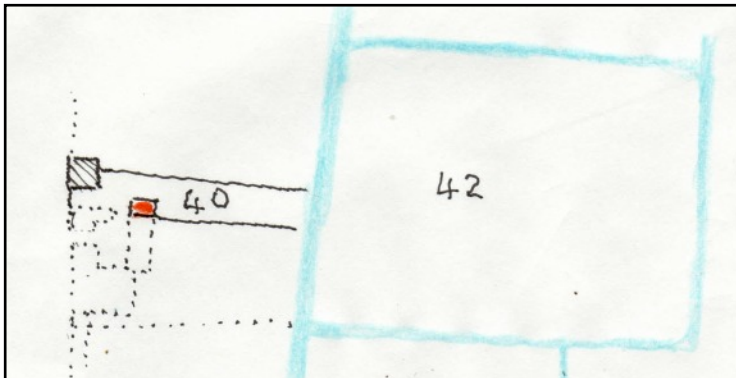
Morfa Borth - the Marsh Harbour

The ground for this garden was enclosed in 1809 by a mariner John Morris from the pebble embankment thrown up by the sea, and called 'waste' because it was no use for farming. This is one of the earliest enclosures in Morfa Borth. The ground measured 1 rod and 23 perches - less than a quarter of an acre - and extended to a brook.



LEFT On a map of 1829 it is shown with a cottage reaching to both sides of its ground and John Morris and his family lived there. A rent of £1.4s had to be paid every year to the Crown manor who owned the ground. The cottage was set back from the street. Opposite over the road was the beach. (National Archives LRRO 1/3060)

John Morris was a mariner and was already quite elderly by the 1841 Census, 64 years old. His wife Margaret was 60 and in their home was their 20 year old son William, and an eleven year old grand-daughter Elizabeth Jones. The position of the Census entry suggests he had moved from his old cottage.



LEFT In 1848 we can see what had happened. Firstly the cottage, coloured in red, is smaller, no longer reaching right across the ground. Secondly a new cottage had been built at the road edge, hatched, and it belonged with the ground next door. This was Captain William Jones's cottage and today has become Eltham. A Morris had wed a Jones - hence the new

cottage. With the ground then went an enclosure at the edge of the Cors Fochno which survives with its boundary of watery ditches today. It would have been pasture. Captain Jones could have had a dairy cow and some sheep which his wife and children would have had to look after when he was away at sea, or he could have rented it out (Tithe Apportionments Map, Llanfihangel Genau'r Glyn, Cyfoeth Township, On-line at CYNEFIN).

By 1886 the old cottage had completely gone. Morris's ground had become Eltham's garden stretching down to the brook (25 inch Ordnance Survey Map surveyed in 1886 and published in 1888).

Archifdy Ceredigion Archives
yn cyflwyno / presents
Tai'r Borth / Houses of Borth
gan/by Beryl Lewis
[cyf/ref ADX/1629]

Mae **Tai'r Borth** yn cynnwys dros 350 hanes sy'n ymwneud ag adeiladau unigol ac mae'r hanesion wedi'u darlunio â chyfoeth o ffotograffau, mapiau a dogfennau. Mae'r ffeiliau ar gael ar ein gwefan: <https://www.archifdy-eredigion.org.uk/tairborth.php?lang=cy>

Hoffem ddiolch i Beryl am fod mor garedig â chaniatáu i ni rannu ei gwaith â'r gynulleidfa ehangaf bosibl.

Ceidw Beryl Lewis yr hawlfraint yn ei gwaith ac mae'r hanesion yn cael eu rhannu at ddibenion preifat ac ymchwil yn unig.

Houses of Borth consists of over 350 histories of individual buildings, lavishly illustrated with photographs, maps and documents. All the files are available from our website: <https://www.archifdy-eredigion.org.uk/tairborth.php>

We would like to thank Beryl for her kindness in letting us share her work with the widest possible audience.

Beryl Lewis retains the copyright in her work and the histories are made available for private use and research only.



Cyngor Sir
CEREDIGION
County Council



Archifdy
Ceredigion
Archives