

THE BUILDINGS OF MOREFA BORTH

- the Marsh Harbour

Ceredigion



That part of Borth Village on a pebble bank with the sea on one side and the Cors Fochno marsh some reclaimed and the railway on the other. In the distance is the River Dyfi. Photograph Michael Lewis

Photographs and History by BERYL LEWIS

This work is for research and educational purposes only.

GLANRHYD HOUSE called 'Homeside' in 1891.

This cottage was built after 1845 but before 1871 for a member of the Lewis family, Elizabeth Lewis, a grocer. It has the name 'Glanrhyd' - meaning 'by the ford' - because there was a ford not far away on the lane to Ynysfergi and Brynlllys where the brook that ran at the end of the gardens behind the High Street houses crossed the lane. There is a ditch there today.



This is a single fronted cottage with its front door on the north. It has an upper floor lit by modern dormer windows in the roof at the front and the back. These upper dormer windows are in the pattern of sash windows. The barge boards are plain but nicely shaped and have finials. The cottage walls are rendered, but likely to be rubble stone. The chimney on the north is shared with Glanryd Number 1 and is rendered brick. It has the shape of a stone chimney and is rendered. There are two chimney pots. The lower front window is a bay window, A sloping slate roof at the top of the bay window also extends across to shelter the front door. A plain post supports the end of this roof. The front door is modern. There is a



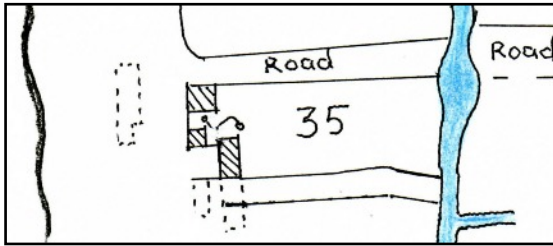
narrow front garden enclosed by a low block wall with a gate. The back of the cottage has a wing its upper floor lit by a dormer window on the north side that matches the ones on the front. It has a slate coloured roof ending with a red brick chimney with one chimney pot. Rubble stone including rounded beach stones can be seen in its end wall which is rendered.

LEFT TOP This was the front of the cottage in February 2015.

LEFT BELOW The rear wing of the cottage on the left which I almost the width of the cottage. The dormer window has the same finial as the dormers in the front of the cottage.

Glanrhyd House page 2

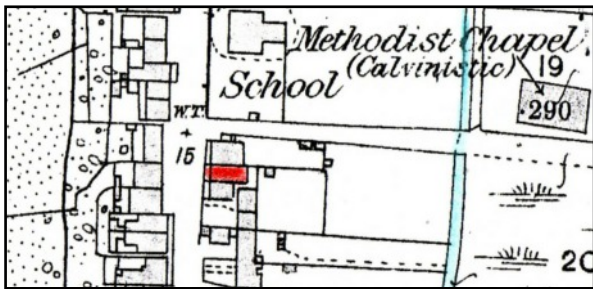
The ground on which this house stands was enclosed by Lewis Lewis, a weaver, in 1823 from the pebble embankment thrown up by the sea, and called 'waste' because it was no use for farming. Lewis's ground measured 1 rod and extended to a brook. (National Archives LRRO 1/3060)



LEFT Lewis was to build cottages on it, but he did not build on the ground on which Glanrhyd House stands today beside the street, nor in 1845. This map shows the ford 'rhyd' (Copied from the Tithe Apportionments Map for Llanfihangel Genau'r Glyn, Cyfoeth Township, Cynefin on-line.)

In the 1871 Census 49 year old Elizabeth Lewis was a grocer there. She had not married, and was probably related to the weaver Lewis Lewis.

By the 1881 Census in the house was a young mariner's wife, Anne Davies, aged 28, Her elder sister Catherine Lloyd, aged 34, unmarried and a barmaid was there too. One of Lewis Lewis's daughters, Anne, had wed a Davies daughter of a shoemaker, but this Anne is another member of the Davies family. There were Davies's in some of the other cottages too.

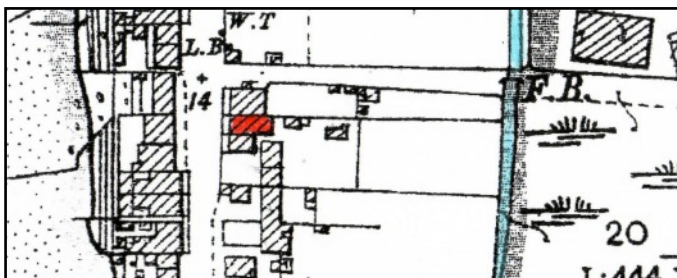


LEFT This is how the house looked in 1886, it was much larger than other cottages and had a tiny yard behind it. It is marked in red. The garden ground and ground to the brook was probably still Lewis owned. (A detail from the 25 inch Ordnance Survey Map of 1888, surveyed in 1886, Cardiganshire NW III.10)

At the 1891 Census the house was called 'Homeside' and another mariner's wife, Catherine Arter was living there. She was born in Borth about 1844, and had an eleven year old son, Arthur Llewellyn Arter.

In 1901 the house was empty.

In 1910 for a valuation for a tax planned but not levied this 'cottage and garden' was valued at £86. There would have been £3.8s to pay, £4.5s gross. The owner was T. S. Morgan of Nantcarro, Llanbadarn Fawr, and living there was David Davies. (Ceredigion Archives and Map at the National Library of Wales).



LEFT On the 25 inch Ordnance Survey Map of 1905 revised in 1904 the house still shared its back garden ground with its neighbours. There are some new small buildings. A Ty Bach - outside lavatory and possibly a pig sty or two are likely.

In 1911, at the Census, despite the extension at the back, the Census only listed four rooms. Back kitchens and sculleries were not counted however. David Davies was a self employed 'general carrier', aged 40, with his wife Margaret Anne aged 37. They had been married for 13 years, and had had eight children, five were still living. Three of their children were born in Llanbadarn Fawr. Their six year old son Caradog was born in Borth, so they had not lived in Borth for long. The other children were David, Morgan, Maj, and Theo.

Glanryhd House Page 3

In 1925 and still in 1938 David Davies paid the Rates. He had become the owner of the house and garden, and was living there.

Lewis Davies paid the Rates for the house in 1949. (Ceredigion Archives) Reginald Quant had a vote for the house in the General Election of 1945. Ann Quant lived next door (in Glanrhyd Number 1)

The name Glanrhyd House is more recent. It was just called 'Glanrhyd' earlier.



Glanrhyd House is the second from the left on this old postcard. - A single fronted cottage. The modern front door is in the same place. Beach stones are in the walling. The chimney appears to be stone and has a little hipped roof and a chimney pot shaped to help with draughts. It shared the chimney with Glanrhyd Number 1. This cottage and Ynys Deri were taller than Glanrhyd Number 1. The ground floor window had small panes of glass and rendered low stone walls enclosed the narrow front garden.

Paying the rates in 1963 was Richard Desmond Bond, and he had a vote for the house as did Wendy Anne Bond (Electoral Registers and Rates, Ceredigion Archives).

In 1975 the house had its own small garden with an outbuilding (Historic Maps On-line)

Archifdy Ceredigion Archives
yn cyflwyno / presents
Tai'r Borth / Houses of Borth
gan/by Beryl Lewis
[cyf/ref ADX/1629]

Mae **Tai'r Borth** yn cynnwys dros 350 hanes sy'n ymwneud ag adeiladau unigol ac mae'r hanesion wedi'u darlunio â chyfoeth o ffotograffau, mapiau a dogfennau. Mae'r ffeiliau ar gael ar ein gwefan: <https://www.archifdy-ceredigion.org.uk/tairborth.php?lang=cy>

Hoffem ddiolch i Beryl am fod mor garedig â chaniatáu i ni rannu ei gwaith â'r gynulleidfa ehangaf bosibl.

Ceidw Beryl Lewis yr hawlfraint yn ei gwaith ac mae'r hanesion yn cael eu rhannu at ddibenion preifat ac ymchwil yn unig.

Houses of Borth consists of over 350 histories of individual buildings, lavishly illustrated with photographs, maps and documents. All the files are available from our website: <https://www.archifdy-ceredigion.org.uk/tairborth.php>

We would like to thank Beryl for her kindness in letting us share her work with the widest possible audience.

Beryl Lewis retains the copyright in her work and the histories are made available for private use and research only.



Cyngor Sir
CEREDIGION
County Council



Archifdy
Ceredigion
Archives