

THE BUILDINGS OF MOREFA BORTH

- the Marsh Harbour

Ceredigion



That part of Borth Village on a pebble bank with the sea on one side and the Cors Fochno marsh some reclaimed and the railway on the other. In the distance is the River Dyfi. Photograph Michael Lewis

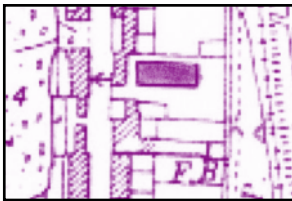
Photographs and History by BERYL LEWIS

This work is for research and educational purposes only.

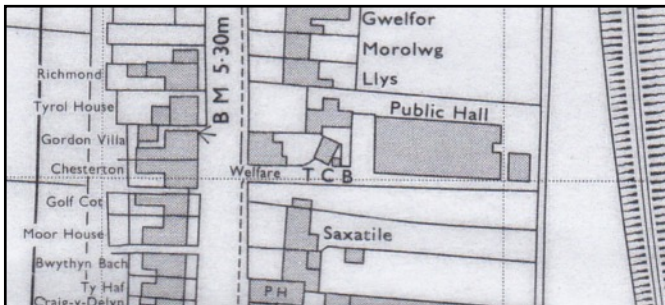
MEMORIAL HALL, NEUADD GOFFA, Morfa Borth (The Marsh Harbour)

Situated on the east side of the High Street, at the rear of 'Welfare', and alongside the present car parking area beside Saxatile's garden. The Foundation Stones were laid in August 1925. The hall burnt down on May 12th 1993.

Laying down foundation stones in 1925 were Mrs Anna M. Roderick for the Women's Institute, and Ethel M. Biddle for the Borth Carnival Committee. The stones have been kept and are now outside the Borth's present Uppingham Hall.



LEFT A Six inch Provisional Ordnance Survey Map of 1948 shows the hall, coloured in red, lying immediately behind Welfare, its site extended to the ditch – a former brook, and allowed a generous amount of land around it for parking, some behind Saxatile's garden.



LEFT By 1975 some of the area round it had gone as Saxatile's garden had extended to the ditch. The building at the rear of the hall was a Council owned Public Convenience. (Detail from a Crown Plan SN 6089-6189, Ceredigion Archives, and Aberystwyth Rural District Council Minutes 20th November 1964)



A photograph in Y Tincer of June 1993 taken by Anthony Pugh shows it after the fire. It had an important looking front built of brick, rendered, and with tall flat pale coloured columns enclosing a large arched front window, the arch with a keystone and stops, and the two

doorways either side, probably with glazed doors, were emphasized by a circular window above them with four keystones, a pilaster strip, and interesting curves at the top of the wall. Each end of the front had a massive and tall pillar. After it turned the corner there was again an interesting curve on the top of the wall which curved downwards towards a final pillar. This end enclosed a smaller arched window. The wall behind that had a skin of bricks but some other lining. There was a cellar under the front section of the building. Within the building was a hall, a committee room, a place to play billiards, a kitchen and the usual conveniences and cloakroom. The hall was heated by a coal fired boiler on a concrete base, later replaced by an oil fired boiler.

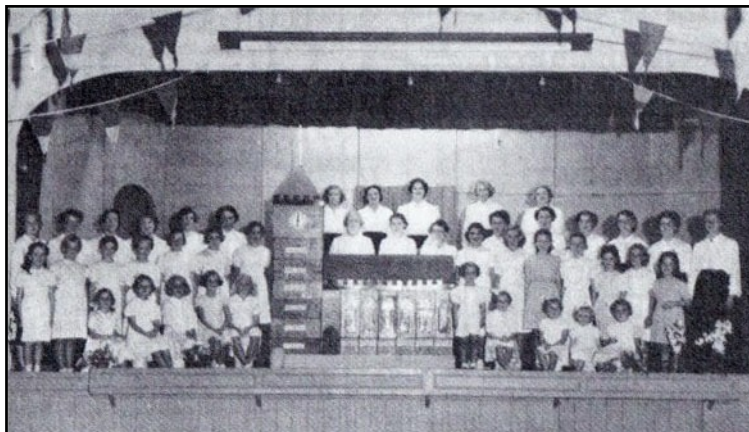


LEFT This photograph shows a meal in progress in the Hall in 1981. Flags indicate this was a celebration.

Courtesy of Y Tincer.

The Hall had a water supply. In 1964 the Council hoped it was not passing through the meter on the supply pipe to the Public Conveniences at the rear of

the Hall (*Aberystwyth Rural District Council Minutes 20th November, Ceredigion Archives*)



LEFT This photograph shows there was room on the stage for a choir of 44 ladies and children. (Courtesy of Y Tincer June 1993).

Memories of the Hall from local people who had taken part in plays and music and other events were printed in Y Tincer of June 1993. (*Aberystwyth Public Library*)



ABOVE A photograph from Y Tincer, June 1993 shows extensive damage to the building.

The fire began on Thursday morning, May 12th in the daytime, an hour after a council meeting to elect Dilwyn Owen as Mayor. The piano, pictures of councillors and of former Borth choirs were lost. The Mayor's chain and a certificate concerning dolphins were saved. This Memorial Hall had served Borth for 68 years



LEFT The site in August 2013. Banks still mark the old walls, but the site is very overgrown. Green squares on the tarmac show where posts were put in by the Council for a fence to keep people away from the ruined area.

The Memorial Hall Committee in December 1997 approached the Charity Commissioners about the site, who gave permission for a house to be built the money to be used for a charitable end. The site was surveyed and the surveyor was to negotiate with the Ceredigion Council about selling the land and building a house. (*Y Tincer, Tachwedd 1998 page 10*) Nothing however was built there.

Archifdy Ceredigion Archives
yn cyflwyno / presents
Tai'r Borth / Houses of Borth
gan/by Beryl Lewis
[cyf/ref ADX/1629]

Mae **Tai'r Borth** yn cynnwys dros 350 hanes sy'n ymwneud ag adeiladau unigol ac mae'r hanesion wedi'u darlunio â chyfoeth o ffotograffau, mapiau a dogfennau. Mae'r ffeiliau ar gael ar ein gwefan: <https://www.archifdy-eredigion.org.uk/tairborth.php?lang=cy>

Hoffem ddiolch i Beryl am fod mor garedig â chaniatáu i ni rannu ei gwaith â'r gynulleidfa ehangaf bosibl.

Ceidw Beryl Lewis yr hawlfraint yn ei gwaith ac mae'r hanesion yn cael eu rhannu at ddibenion preifat ac ymchwil yn unig.

Houses of Borth consists of over 350 histories of individual buildings, lavishly illustrated with photographs, maps and documents. All the files are available from our website: <https://www.archifdy-eredigion.org.uk/tairborth.php>

We would like to thank Beryl for her kindness in letting us share her work with the widest possible audience.

Beryl Lewis retains the copyright in her work and the histories are made available for private use and research only.



Cyngor Sir
CEREDIGION
County Council



Archifdy
Ceredigion
Archives