

# THE BUILDINGS OF MOREFA BORTH

- the Marsh Harbour

Ceredigion



That part of Borth Village on a pebble bank with the sea on one side and the Cors Fochno marsh some reclaimed and the railway on the other. In the distance is the River Dyfi. Photograph Michael Lewis

Photographs and History by BERYL LEWIS

*This work is for research and educational purposes only.*

# SŴN-Y-MÔR

Wernfach - little marsh - Morfa Borth

At the very southern end of Morfa Borth with the road to Clarach, boat park and beach in front and the Lôn Glan-y-môr at the back. Shown on a postcard of 1925. Formerly Môrlan Cottage.



This is the northern half of a pair of brick semi-detached houses. It is noticeably taller than its neighbours and has a deep gable roof, and a dormer window lighting an attic room, and it shares a brick chimney with four chimney pots with its neighbour Newhaven. It has a canted bay windows on the upper and lower floor. Sŵn-y-don's front door is on the north side of the front, with a balcony extending over it with wooden railings and accessed by a door. The north side wall is still red brick but the front of the house is rendered. A low brick wall encloses the narrow strip of ground in the front of the house. The house opens directly on to the road there is no pavement. The Welsh name means sound of the wave or waves. It is not clear at present what the original name of this house was.



*ABOVE the house in 2016 and LEFT the pair of houses.*

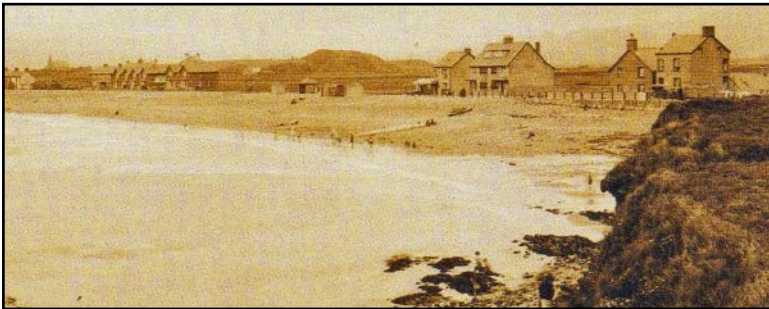
The house was built on a strip of land that was 'beach'. The embankment of stones had been thrown up by the sea, and belonged to the Crown Manor. At that time the Lôn Glan-y-môr (Sea bank Lane) was the only road and it was unfenced. A postcard photograph of 1914 shows the site. On a Crown

Manor map surveyed in 1925 it was mostly shown as beach, the manor owning eastwards of a line from the edge of the beach cottages to the corner of the road to Llandre. (National Archives LRRO 1/3060) However, after 1925 stones were collected and an embankment built which enabled the road to Clarach to run along the edge of the sea. There is a postcard showing villagers collecting stones from the beach. This made it possible to have buildings on the strip of land, opening on to the new road and the beach with the Lôn Glan-y-môr at their back.



*The strip of beach on a postcard dated 1914. Beach Cottage is already there at the far end of the strip. On the far left is the Lôn Glan-y-môr.*

*BELOW is a detail from a postcard dated 1925. The tall pair of houses is already built with the dormer windows in the deep roof and another chimney at the back.*



The houses opened directly on to the road and the beach. However they were at the mercy of westerly gales with spring tides, and they regularly flooded. The Council eventually built a sea wall and boat park which protected the houses, but afterwards the

family in Craigweil said their house suffered from damp as some of the water draining off the marsh at the back of the house which had previously flowed through the shingle bank below the house to the beach was blocked by the sea wall.



*LEFT The rear of the house from the footpath, in 2016. It has another brick chimney on the northern end of the roof and a generous sized dormer window. The site slopes downwards so the rear of the house is taller, and steps are needed down to the ground from the red back door. On the south side of the back there is an extension with windows, and another less wide which has a window and a low door - possibly once a place to store coal. All the windows are modern. In front is a car port supported on brick pillars.*

In 1934 John H. James was the owner and David John Richards the tenant. The name of the house had been Morlan Cottage changed to Sŵn-y-môr (sound of the sea).

Margaret J. Kelly paid the rates and had a vote for the house in 1957 and 1963 (Electoral Registers and Rates Ceredigion Archives).

Archifdy Ceredigion Archives  
yn cyflwyno / presents  
**Tai'r Borth / Houses of Borth**  
gan/by Beryl Lewis  
[cyf/ref ADX/1629]

Mae **Tai'r Borth** yn cynnwys dros 350 hanes sy'n ymwneud ag adeiladau unigol ac mae'r hanesion wedi'u darlunio â chyfoeth o ffotograffau, mapiau a dogfennau. Mae'r ffeiliau ar gael ar ein gwefan: <https://www.archifdy-eredigion.org.uk/tairborth.php?lang=cy>

Hoffem ddiolch i Beryl am fod mor garedig â chaniatáu i ni rannu ei gwaith â'r gynulleidfa ehangaf bosibl.

Ceidw Beryl Lewis yr hawlfraint yn ei gwaith ac mae'r hanesion yn cael eu rhannu at ddibenion preifat ac ymchwil yn unig.

**Houses of Borth** consists of over 350 histories of individual buildings, lavishly illustrated with photographs, maps and documents. All the files are available from our website: <https://www.archifdy-eredigion.org.uk/tairborth.php>

We would like to thank Beryl for her kindness in letting us share her work with the widest possible audience.

Beryl Lewis retains the copyright in her work and the histories are made available for private use and research only.



Cyngor Sir  
**CEREDIGION**  
County Council



Archifdy  
Ceredigion  
Archives