

THE BUILDINGS OF MOREFA BORTH

- the Marsh Harbour

Ceredigion



That part of Borth Village on a pebble bank with the sea on one side and the Cors Fochno marsh some reclaimed and the railway on the other. In the distance is the River Dyfi. Photograph Michael Lewis

Photographs and History by BERYL LEWIS

This work is for research and educational purposes only.

TY BACH

Morfa Borth - the Marsh Harbour

A modern house re-built from old rubble stone cottage about 1996.



ABOVE The house in 2018. It had grassland in front of it, and behind was close to the small gardens of Alma and Glanaber.

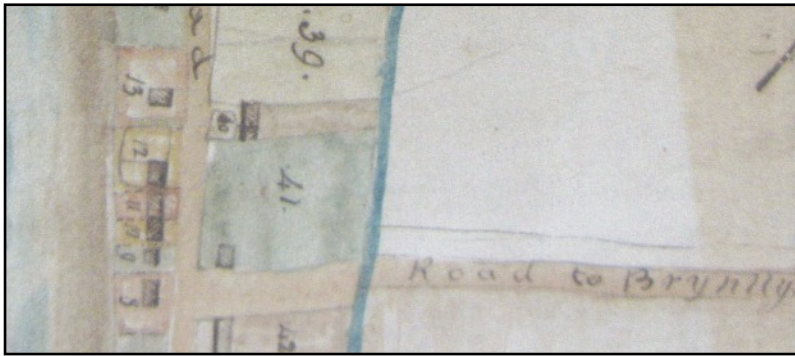
This house is hidden from the High Street being at the rear of Alma and Glanaber. Access is from a pedestrian path along the north boundary of the Meddgfa car park. The house is a storey and a half high under a gable roof of slates parallel to the street. Dormer windows light the upper floor, and at each gable end is a further window. In its very narrow garden is a conservatory and two sheds. There is a gate in the fence to access the field.



LEFT There is a brick chimney with two flues. The gable end windows are an important part of its upstairs bedrooms.

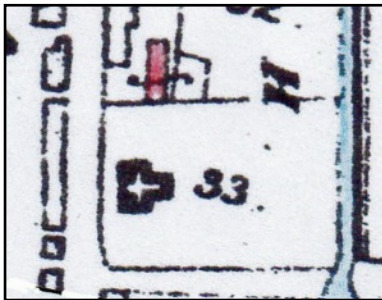
The walls are concrete block cavity wall construction, but some of the rubble stone walls from the earlier

The ground on which the house was built was the stone embankment built up by the sea. The road was very old and a quick way to North Wales via a ferry across the River Dovey. It was a turnpike road by the 1770s.



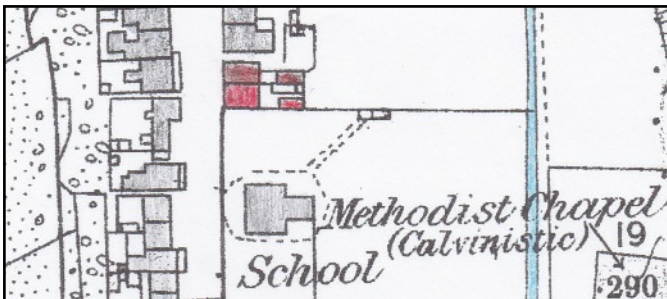
LEFT A narrow plot, number 40 of just four perches on the stone embankment owned by the Crown Manor had been enclosed by 1825 by David Jenkins, a mariner. There were cottages on it in 1829 set back from the road, but none on the roadside where Glanaber stands today.

Number 41 was owned by the church (Detail from a Crown Manor Watercolour Map of 1829, National Archives LRRO 1/3060)

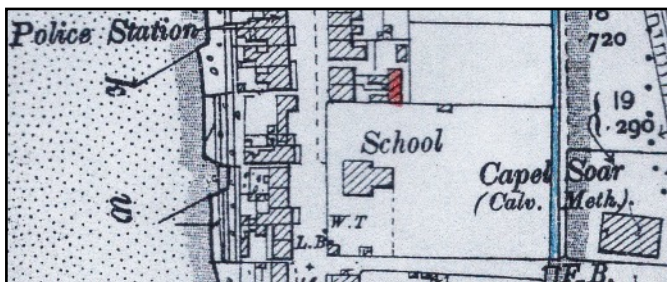


LEFT David Jenkin's cottages in 1848, marked in red. This site of old cottages set back from the street is where Hideaway stands today. The church had built a school on number 33 (replaced today by the Meddgfa) (Tithe Apportionments Map, Llanfidhangel Genau'r Glyn, Cyfoeth Township. On-line at Cynefin).

Alma with Glanaber and a cottage at the back were called by the Census takers 'Alma Place'. Alma was a battle in the Crimean War in September 1864, a victory for the British and French, and Alma was a nearby river. The date fits quite well with a date of about 1861 for the houses of Alma Place. They were homes of a Jenkins family of master mariners built on the family ground.



LEFT Alma and Glanaber in 1886 built beside the street. There was the remains of those old cottages at the back. However the ground that Hideaway stands on was not yet built on.



LEFT By 1904 a new building had gone up along the rear.

In 1910 for a tax planned but not levied, and in 1925 the building was owned by Anna Ellen Hughes of Alma a sailor's wife and tenanted by Edward Meddins. It was called a 'cottage by Alma'. Nellie Meddins paid the rates for Alma in 1949 but there was no mention of the cottage.

There was no mention of it in the rates in 1957 or 1963 (Rates, Ceredigion Archives).

In 1975 the building is still there and extensions from Alma and Glanaber had reached it. The house had no name but was inside the boundary of their back garden. The school building was still next door.



ABOVE On this detail from a modern Council Map the layout of the houses can be seen - there was access to the front of this house from the High Street on the north side of it. The house filled the width of its plot. The car park for the Meddgyfa now stood on the old school's ground to the south.

LEFT In 1975 the building is still there and extensions from Alma and Glanaber had reached it. The house had no name but was inside the boundary of their back garden. The school building was still next door.

Archifdy Ceredigion Archives
yn cyflwyno / presents
Tai'r Borth / Houses of Borth
gan/by Beryl Lewis
[cyf/ref ADX/1629]

Mae **Tai'r Borth** yn cynnwys dros 350 hanes sy'n ymwneud ag adeiladau unigol ac mae'r hanesion wedi'u darlunio â chyfoeth o ffotograffau, mapiau a dogfennau. Mae'r ffeiliau ar gael ar ein gwefan: <https://www.archifdy-ceredigion.org.uk/tairborth.php?lang=cy>

Hoffem ddiolch i Beryl am fod mor garedig â chaniatáu i ni rannu ei gwaith â'r gynulleidfa ehangaf bosibl.

Ceidw Beryl Lewis yr hawlfraint yn ei gwaith ac mae'r hanesion yn cael eu rhannu at ddibenion preifat ac ymchwil yn unig.

Houses of Borth consists of over 350 histories of individual buildings, lavishly illustrated with photographs, maps and documents. All the files are available from our website: <https://www.archifdy-ceredigion.org.uk/tairborth.php>

We would like to thank Beryl for her kindness in letting us share her work with the widest possible audience.

Beryl Lewis retains the copyright in her work and the histories are made available for private use and research only.



Cyngor Sir
CEREDIGION
County Council



Archifdy
Ceredigion
Archives